



**Bring me to life by
colouring me in!**



Wookey Hole Jokes

What's a witch's
favourite subject
in school?
Spelling

What do you get
if you cross a
witch with ice?
A cold spell

What happened to
the witch who was
naughty at school?
She was ex-spelled

What does a
triceratops sit on?
Its tricera-bottom

Knock, Knock
Who's there?
Owls go
Owls go who?
That's right

How do vampires
carry their books
to school?
In their bat pack

Why is a snake
difficult to fool?
You can't pull its leg

What do you call
a nervous witch?
A twitch

When is it bad
luck to meet a
witch's cat?
When you're
a mouse

Why are vampire
bats like false teeth?
They both come out
at night



Kids Menu

CHOOSE TWO COURSES FOR £10
OR THREE COURSES FOR £12

Drink included - ask your server for today's selection

STARTERS

GARLIC BREAD

GFO, V

SNACK POT

Veg sticks and garlic mayo

GF, VE

PUDDING

TRIPLE CHOCOLATE BROWNIE

Vanilla ice cream, chocolate sauce

V, GFO

TWO SCOOPS OF MARSHFIELD ICE CREAM OR SORBET

Ask our team for today's flavours!

V, VEO

MAIN MEALS

CHICKEN BITES

Chips, baked beans

DFO, VO

MAC 'N' CHEESE

Garlic Bread

Add Bacon £0.50

LOCALLY SOURCED HAM

Fried egg, chips, garden peas

GFO

KID'S CURRY

Lightly spiced rice, Naan

GFO, VEO, VO

BATTERED FISH AND CHIPS

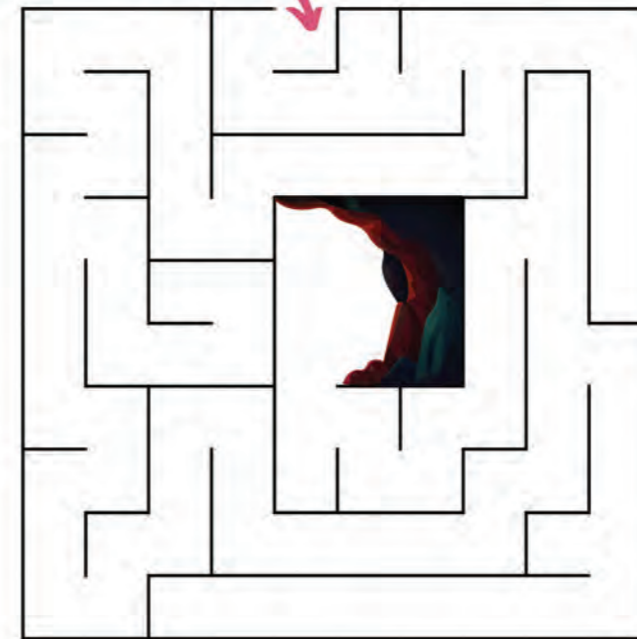
Garden peas, chips

DFO

Help the witch find her way to the cave!

 **Start here!**

Help the witch find her cave by creating a magical path through the maze!



Which hat is the odd one out?



GF = Gluten Free
V = Vegetarian
VE = Vegan
DF = Dairy Free

GFO = Gluten free option available
VO = Vegetarian option available
VEO = Vegan option available
DFO = Dairy free option available

